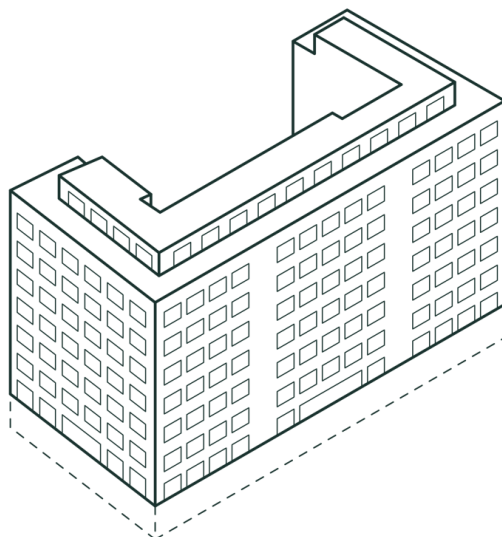


CXTurin | Belfiore

Typology: Student & Explorer Place

Rooms: 246 student + 53 hotel

Beds: 348



Building

The structure of CX via Belfiore has its roots in Turin's coolest and youngest district, San Salvario, a stone's throw from Porta Nuova station and the streets of the historic centre. The building, which originally housed



offices in the Piedmont region, breaks its rigour and offers a new format of hospitality. A mix of Long Stay and Short Stay where different generations and experiences meet to create an explosive mix, an environment where guests are welcomed from the moment they enter by the energy and design of CX: the underground style is combined with metallic tones and fluorescent colours, creating an intriguing atmosphere.

Each room is designed for conviviality and socialization, every common area is practical, modern and fashionable, from the common kitchen to the play room, from the gym to the study rooms, without forgetting the terrace on the 6th floor, from where you can enjoy a view of the roofs and domes of Turin and admire the graffiti of CORN79 "Blu Cerebrale" a few steps from CX Belfiore.

The explosive mood of the common areas seems to find peace in the rooms, the intent of CX in fact is to recreate for each guest a familiar and personal atmosphere.

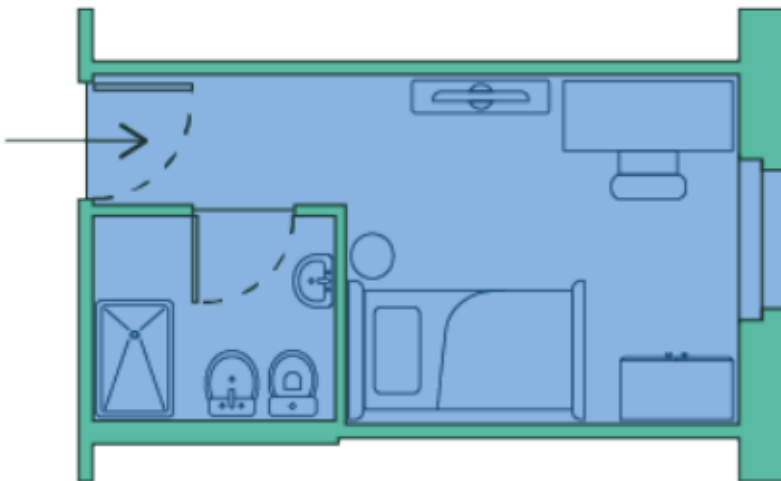
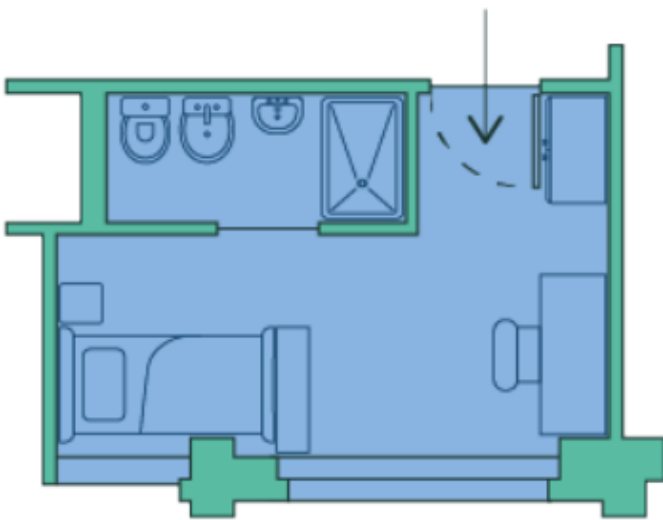
Services and Spaces

- Rooftop
- BBQ Area
- Play zone
- Lounge
- Cafeteria
- Restaurant
- Gym
- Shared kitchen
- Study rooms
- Meeting room
- Laundry
- Parking
- Reception 7/7
- Security H24
- Wi-fi
- Quarterly apartment deep cleaning
- Free access to the gym
- Maintenance service

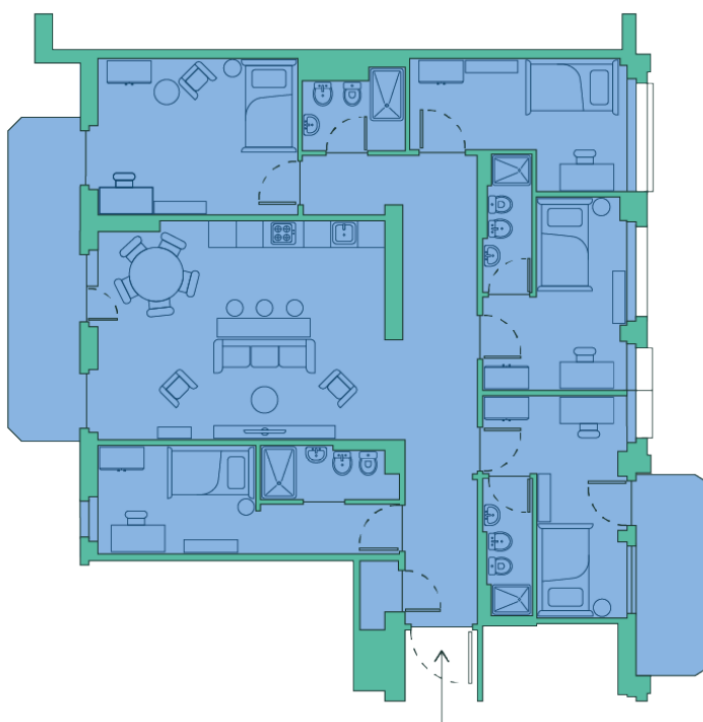
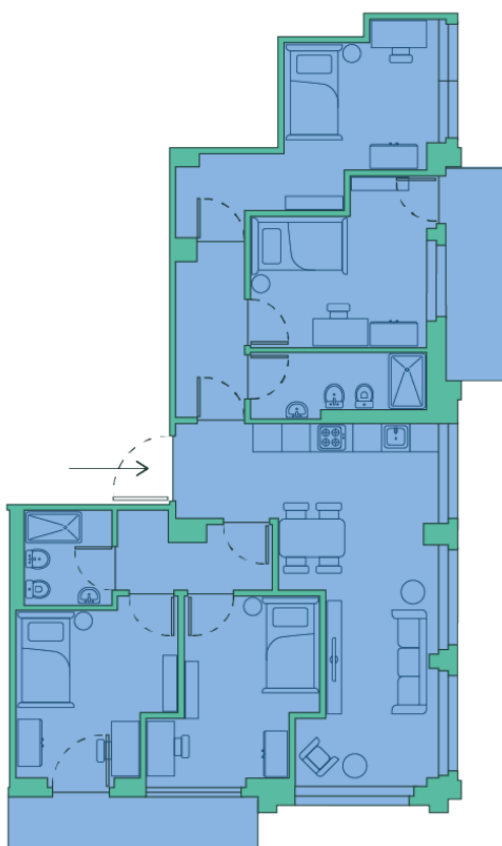


Accommodation Typologies

Student - Studio

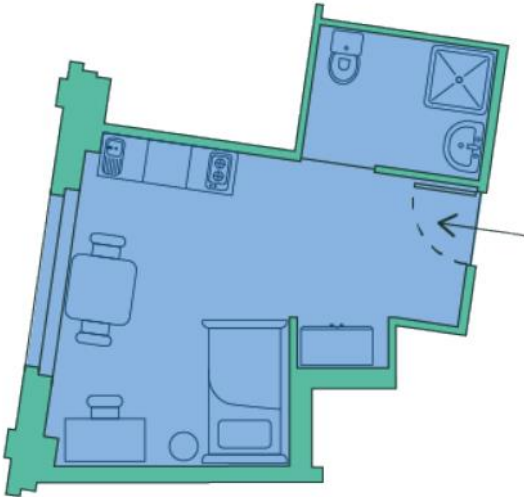


Student - Coliving

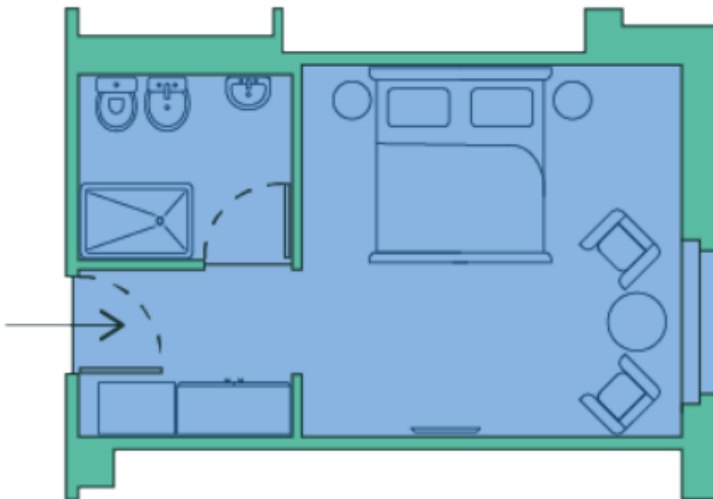




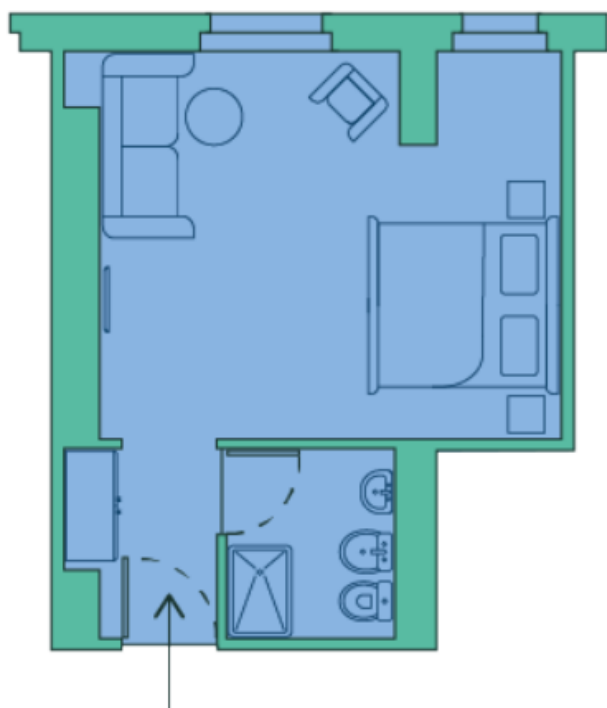
Student - Disable Room Kitchenette



Hotel - Double Room



Hotel - Triple Room



Hotel - Family (double room + bunk bed room)